





This one bedroom raised ground floor apartment ideally located within this Grade II listed conversion at Victoria Square, Jesmond within a stone's throw from the universities, Newcastle's hospitals, the shops, restaurants and cafés of Jesmond and indeed Newcastle City Centre itself.

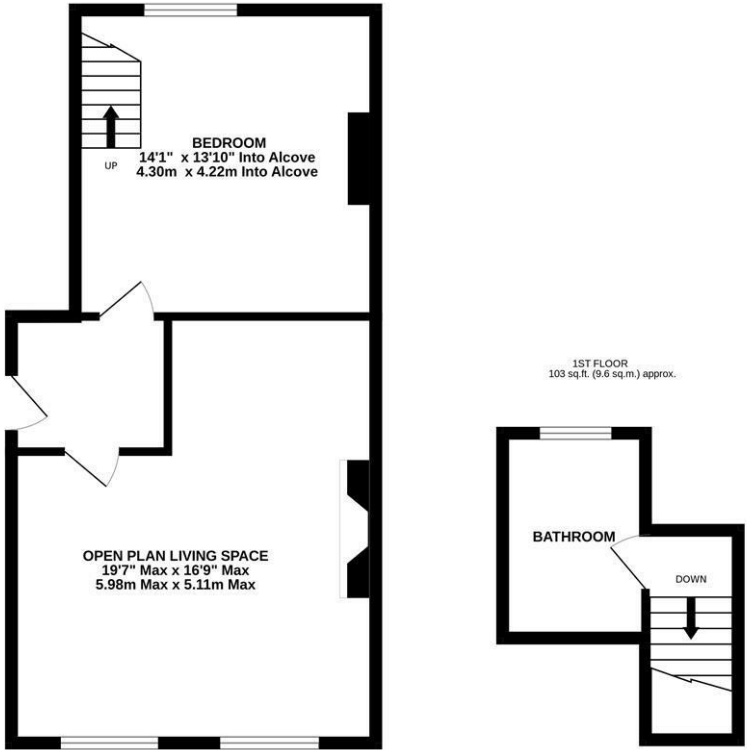
With no onward chain, the accommodation briefly comprises: communal entrance hall; private hallway; 19ft open plan living space with tall ceiling, dual windows and feature fireplace, kitchen area with a fitted ; double bedroom with stairs to; bathroom with three piece suite. Early viewings are advised to avoid disappointment!

Raised Ground Floor Conversion Apartment |  
Grade II Listed Building | One Double Bedroom  
| 614 Sq ft (57.1m2) | 19ft Open Plan Living  
Space with Tall Ceiling | Bathroom | No Onward  
Chain | Leasehold - Share of Freehold - 959 Years  
Remaining | Service Charge - £600 Per Annum |  
Council Tax Band B | EPC: C

EPC - C



GROUND FLOOR  
511 sq.ft. (47.5 sq.m.) approx.



TOTAL FLOOR AREA: 614 sq.ft. (57.1 sq.m.) approx.  
Whilst every attempt has been made to ensure the accuracy of the floorplan contained herein, measurements of doors, windows, rooms and any other items are approximate and no responsibility is taken for any error, omission or mis-statement. This plan is for illustrative purposes only and should be used as such by any prospective purchaser. The services, systems and appliances shown have not been tested and no guarantee as to their operability or efficiency can be given.  
Made with Mengox v2025

Offers Over £145,000

**IMPORTANT NOTE:** These particulars and the descriptions and measurements herein do not constitute representation and whilst every effort has been made to ensure accuracy, this cannot be guaranteed.

